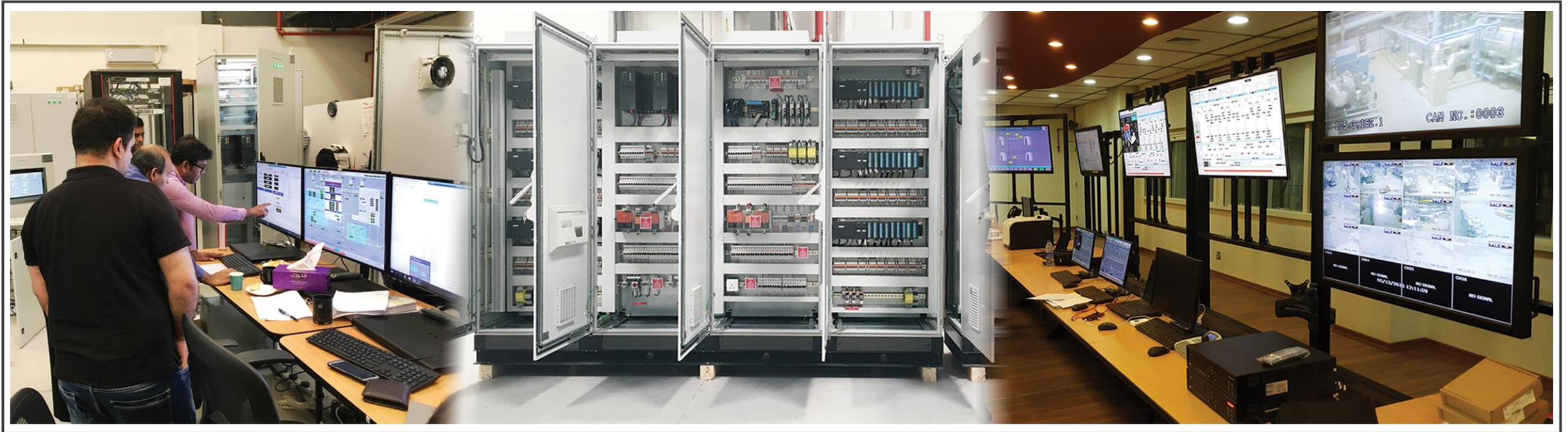


WELCOME TO

Vista Automation



DUBAI OFFICE

P.O. Box 34797, Dubai, UAE
Tel: +971 4 421 4960

ABU DHABI OFFICE

P.O. Box 127296, Abu Dhabi, UAE
Tel: +971 2 644 9331

SAUDI ARABIA OFFICE

P.O. Box 64265, Riyadh, KSA
Tel: +966 11 2795122

ISO 9001:2015
Certified



WHO WE ARE

- ▤ Established in 2007 – Dubai, UAE
- ▤ Part of TS Investment Group
- ▤ Turnkey Solution Provider – Control & Instrumentation
- ▤ Operations in Abu Dhabi & KSA
- ▤ ISO 9001:2015 Certified
- ▤ Employee Strength – 40+
- ▤ State-of-the-Art Integration Facility @ Dubai Science Park
- ▤ Antistatic FAT & I-FAT staging Facility - 80+ Panels at any given time.
- ▤ In-house CompEx (12A, 12B) & TUV FSE Certified Staff
- ▤ Highly Skilled trained Technicians



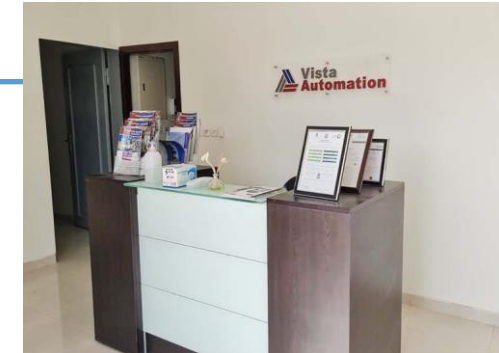
OUR PRESENCE



Vista Automation – Dubai Head Office
P.O. Box 34797, Dubai, UAE
Tel: +971 4 421 4960

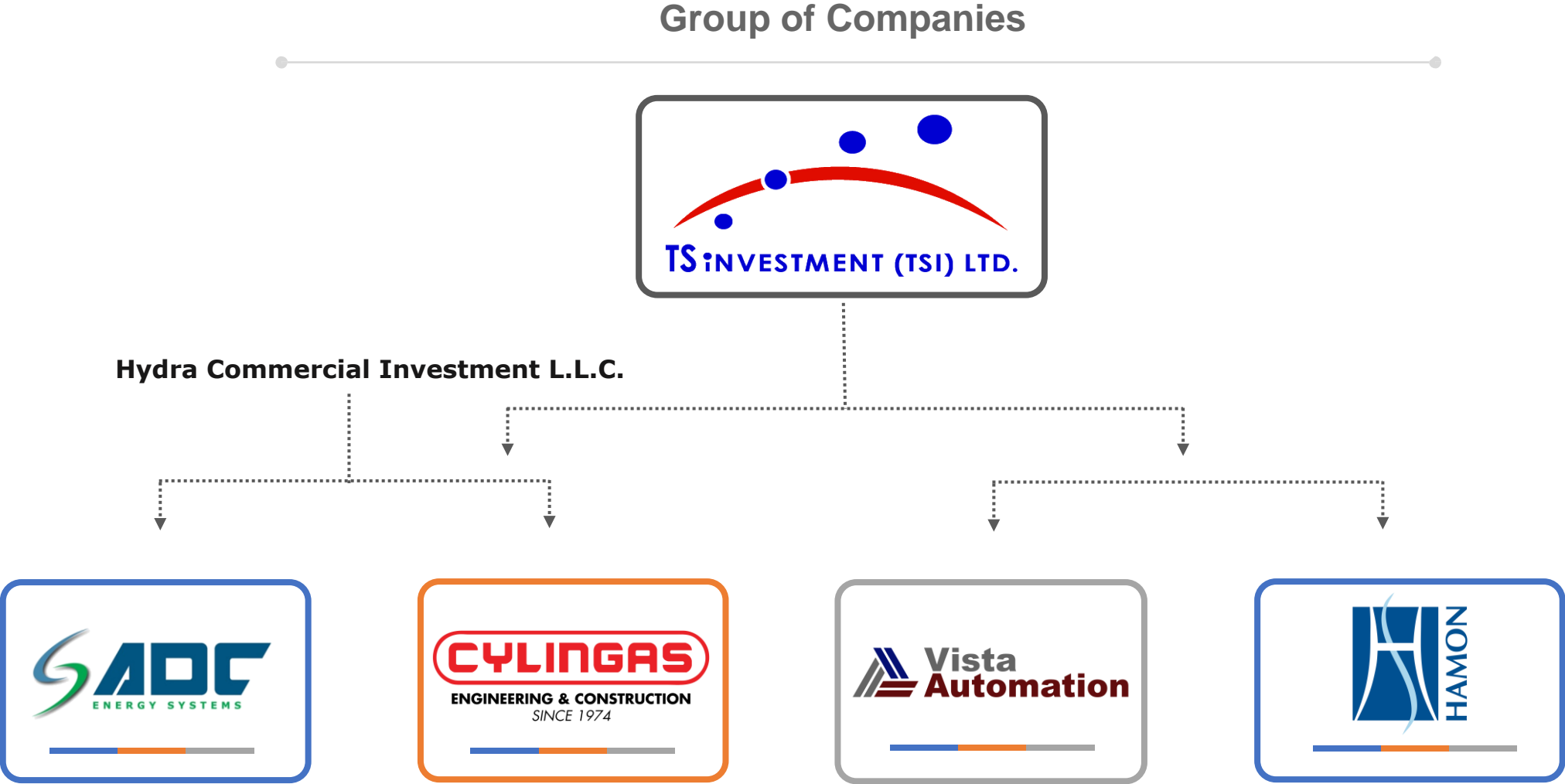


Vista Automation – Abu Dhabi Office
P.O. Box 127296, Abu Dhabi, UAE
Tel: +971 2 644 9331



Vista Automation – Saudi Arabia Office
P.O. Box 64265, Riyadh, KSA
Tel: +966 11 2795122

OUR GROUP OF COMPANIES



OUR GROUP OF COMPANIES



TS investment is the holding company for a diversified portfolio in many disciplines from Oil & Gas, Energy through various group companies present in the GCC region.



ADC Energy Systems LLC, (ADC) an EPC and solution provider company serving multiple energy fields. The journey over the last 15 years has led us to deliver over 800,000 TR cooling capacity, 700 MW electrical distribution capacity and 1,200,000 gpm pumping and piping capacity across GCC.



Cylingas Company LLC, (CCL) was taken over in 2018 by our group and was formerly an ENOC company, Emirates National Oil Company Group and a wholly owned company of the Government of Dubai, established in 1974. CCL is a turnkey EPC & fabrication solution provider for Design, Engineering, Construction and fabrication of Oil and Gas Storage Tanks, Thermal Energy Storage Tanks, Spherical tanks, API 650 and 620 Vertical Storage Tanks, Pressure Vessels, Process Equipment, Pipeline Spools and all kinds of Steel Products. To date, Cylingas head office and its 30,000 Sq M fabrication yard in Dubai, has a subsidiary company in Abu Dhabi and carries EPC projects for various developments all the way from in Fujairah, to Habshan, Ruwais, Bab, ADNOC oil fields as well as Saudi Arabia.



Hamon Cooling Towers Company, (HCTC) is a DAFZA company started in 2004 in partnership with HTE, whose industrial activity goes back to the very beginning of the 20th century. The company is a leading provider technologies and equipment such as Cooling Systems (CS), Air Quality Systems (AQS), Chimneys, Heat Recovery Steam Generators (HRSG) & Waste Heat Boilers (WHB). Over the last two decades, HCTC have delivered equipment to many projects in the GCC region. To mention a few, Dubai Airport, Jebel ALI Airport, Emal power generation, Jeddah airport, King Abdullah Financial District, others for ADNOC, Aramco and many more.

WHAT WE SERVE



**CONSULTANCY
SERVICES**

**ENGINEERING
SERVICES**

**PROJECT
MANAGEMENT**

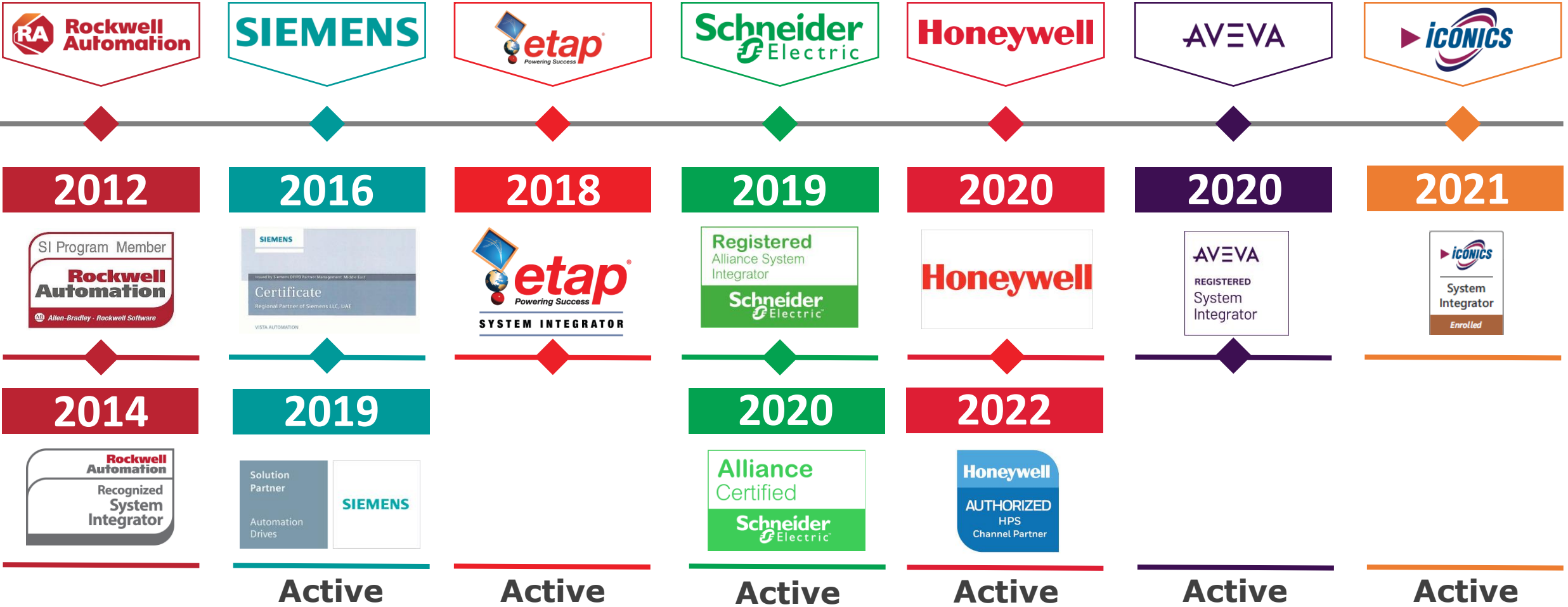
**PANEL
ASSEMBLY &
MANUFACTURING**

**CONTROL &
PROCESS
AUTOMATION
SOLUTIONS**

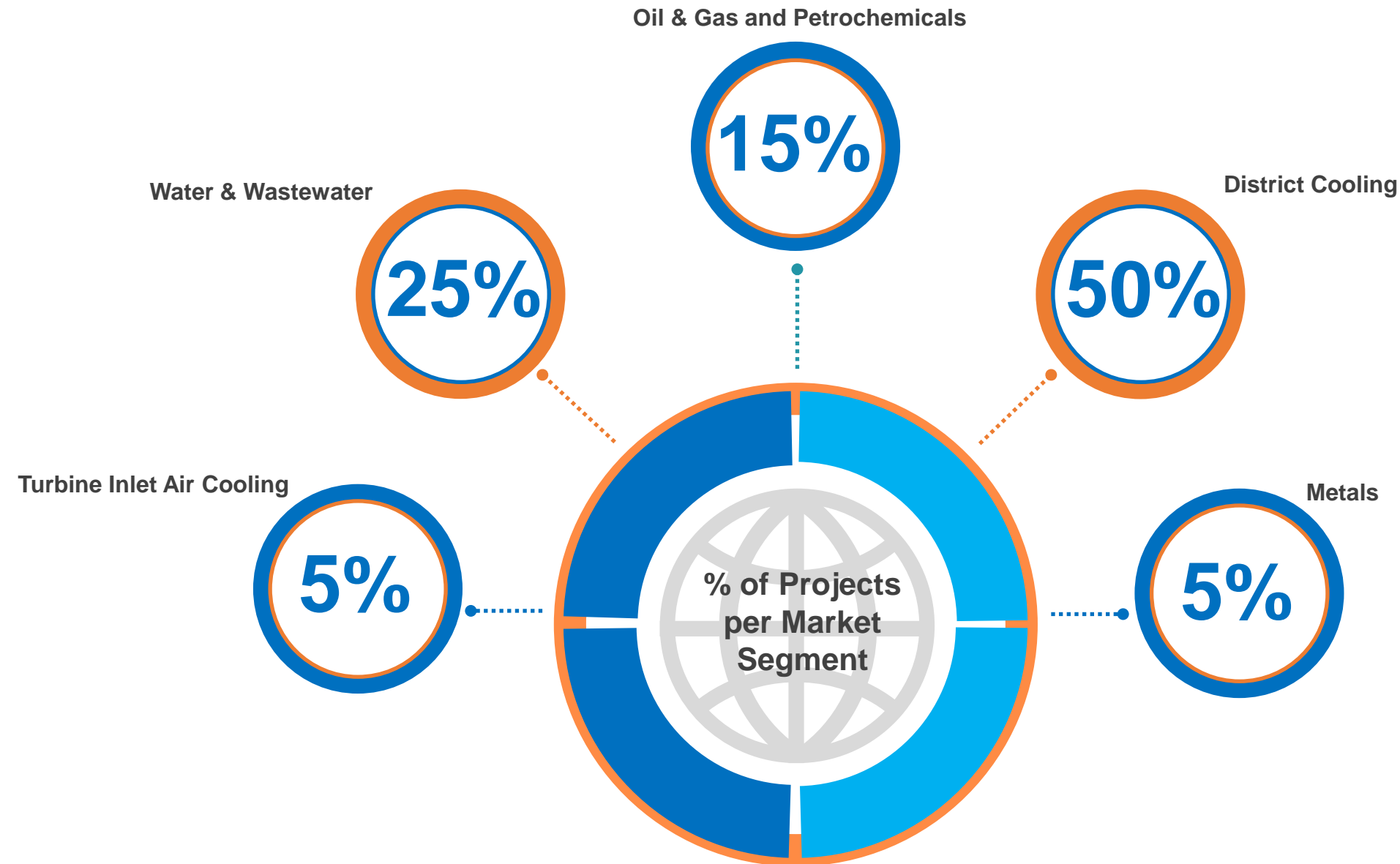
**INSTRUMENTATION
SUPPORT**

**SITE SUPPORT
SERVICES & AMC**

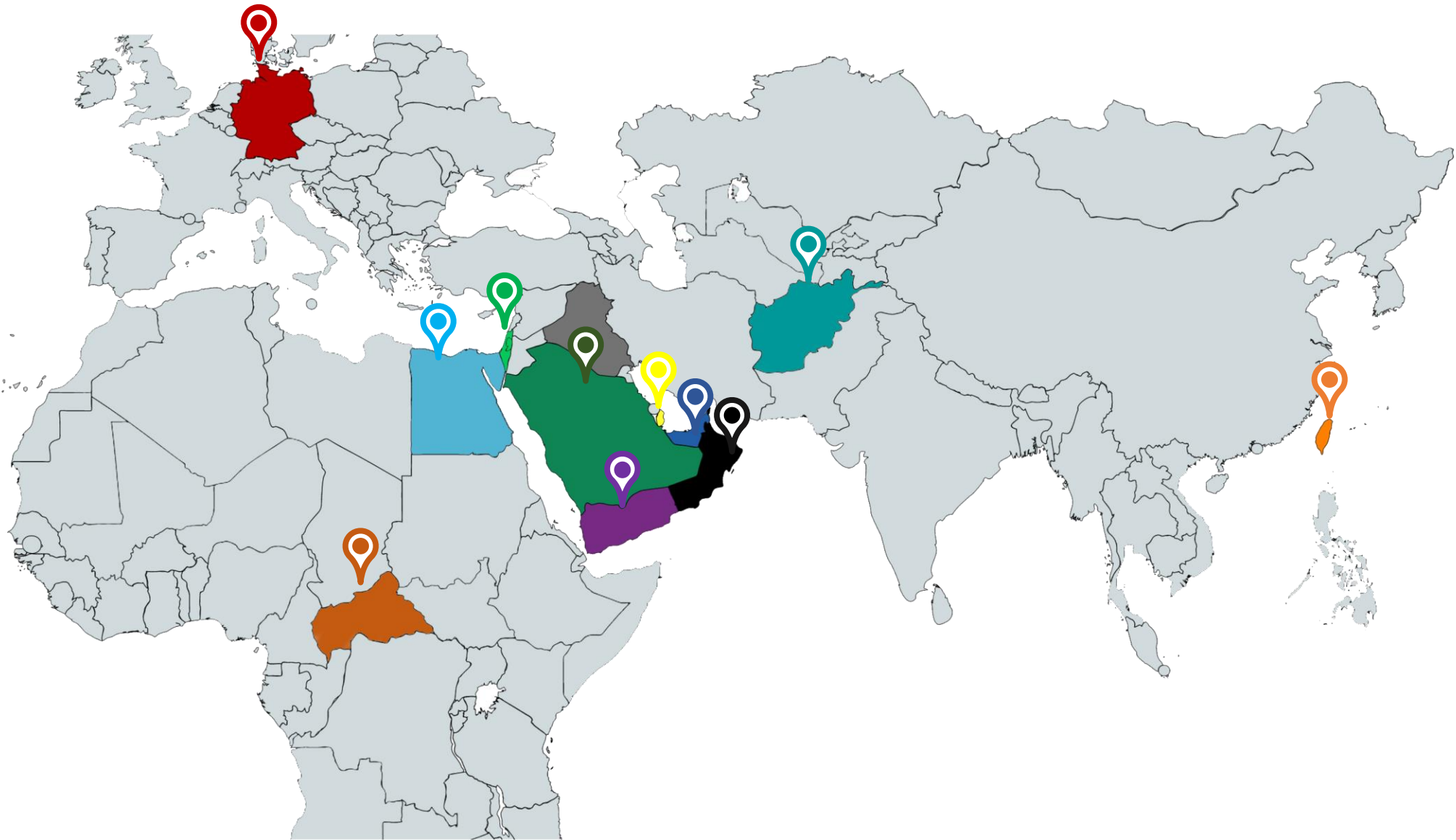
AUTHORIZED SYSTEM INTEGRATOR MILESTONES



EXECUTED PROJECTS / MARKET SEGMENTS



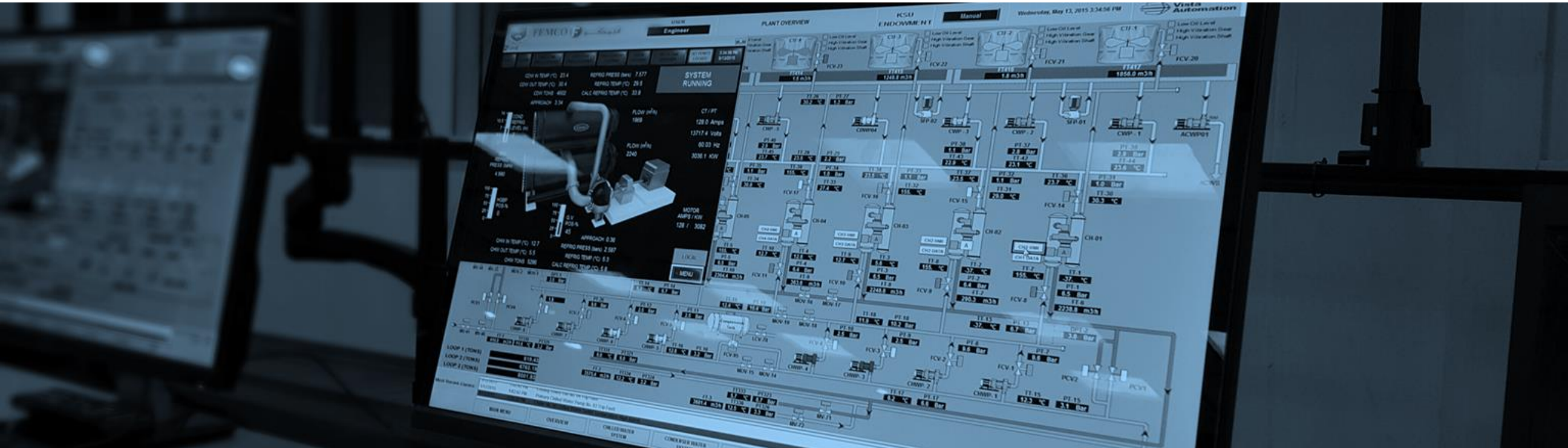
GLOBAL AUTOMATION SOLUTION PROVIDER



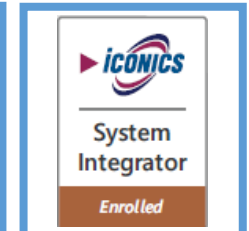
A row of several open industrial electrical cabinets, likely in a factory or warehouse setting. The cabinets are light gray and have their doors swung open to the left. Inside, various electrical components are visible, including circuit breakers, terminal blocks, and wiring. The cabinets are mounted on a concrete floor. The background shows a plain wall and some red vertical pipes.

Products & Services

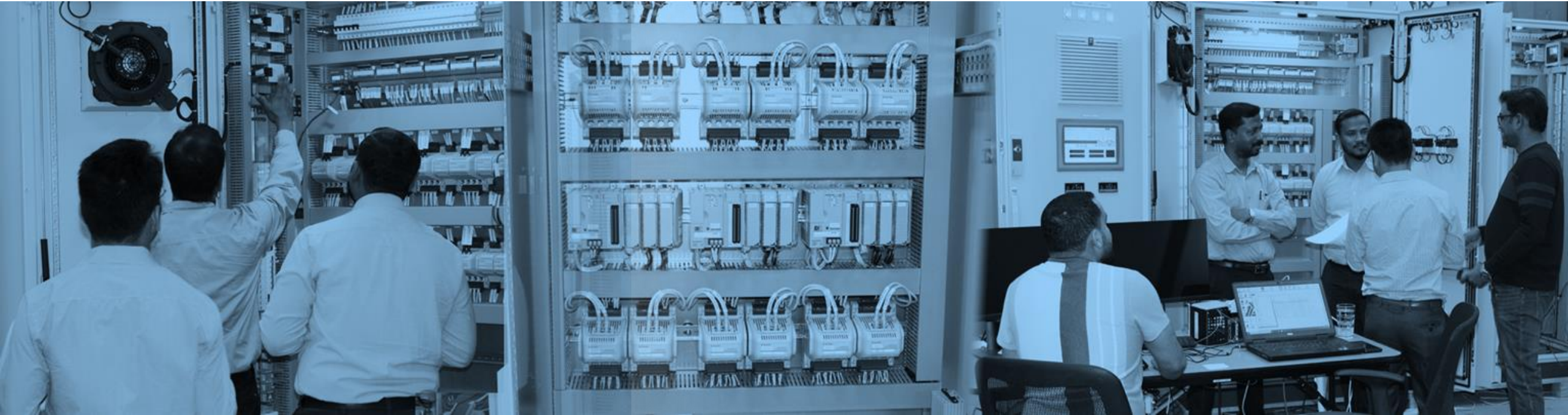
INDUSTRIAL AUTOMATION SOLUTIONS



- ▤ Certified by All main OEMs
- ▤ Turnkey Solutions Provider (I&C)
- ▤ PLC/SCADA Based Solutions
- ▤ DCS Based Solutions
- ▤ Reporting & Interface with Business Layer



ASSET PERFORMANCE MANAGEMENT SOLUTIONS



- ▤ Online Asset Condition Monitoring Solutions
- ▤ Asset Protection & Status Prediction
- ▤ Vibration, Temperature, & Current
- ▤ Vibration Analysis and Diagnostics Software
- ▤ Reliability-Centered-Maintenance Strategy Implementation



Containerized Electrical & Controls Solutions (E-House)



- ▤ Design and Build of the E-House
- ▤ Design, Build, and Installation of the Electrical Panels inside the E-House
- ▤ Design, Build, and Installation of the Control System inside the E-House
- ▤ Design, Build, and Installation of the Control Room Setup inside the E-house

ELECTRICAL SCADA & DISTRIBUTION MANAGEMENT (DMS)



- ▴ Electrical Substation Automation Solutions
- ▴ Electrical SCADA Solutions
- ▴ Electrical Advanced Distribution Management Solutions (ADMS)
- ▴ Electrical Panels – LV MCC / VFD





- ▤ Liquid & Gas Flow Metering Applications
- ▤ PLC & MOV Sequence Control
- ▤ Master Meter Functionality & Reporting
- ▤ HMI Development based on SCADA Software
- ▤ API/AGA Metering Calculations & Verification by 3rd Party Tools
- ▤ Experience in OMNI 3000/6000, OMNI 4000/7000, Floboss S600+, Flow-X, Elster, & Dynamics

POWER MANAGEMENT SOLUTIONS



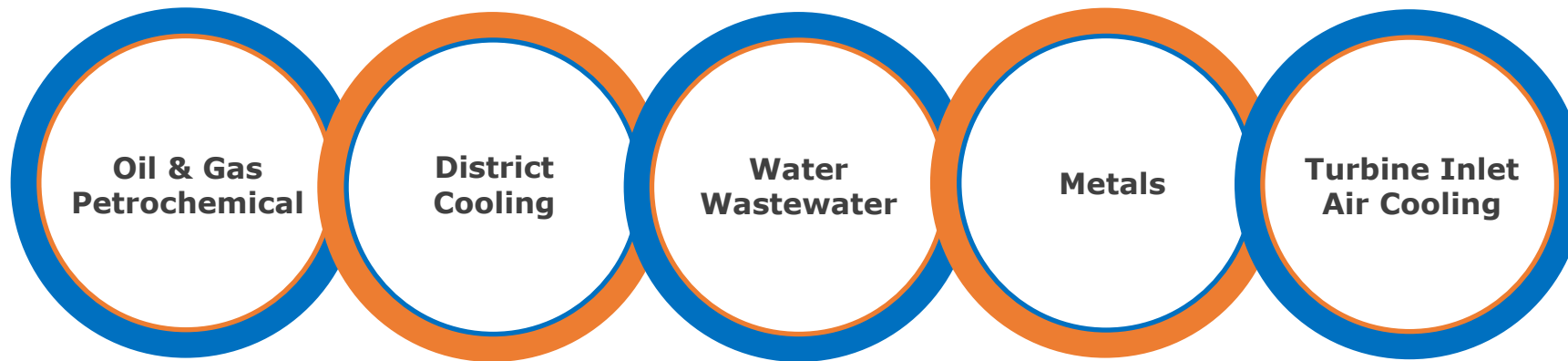
- ▤ Uninterruptible Power Supplies
- ▤ Industrial AC/DC UPS Systems
- ▤ Diesel Generator Sets
- ▤ Solar Power Systems (Off-Grid)



A photograph of a row of industrial electrical cabinets in a factory or warehouse setting. The cabinets are grey and have their doors open, revealing internal components like circuit breakers, busbars, and wiring. The text 'INDUSTRY EXPERTISE' is overlaid in large, white, bold, sans-serif capital letters. The background shows a concrete floor and some industrial equipment.

INDUSTRY EXPERTISE

INDUSTRY EXPERTISE





PROJECT REFERENCES

OIL&GAS AND PETROCHEMICALS PROJECTS



- ▴ Vapor Extraction Control System Upgrade at Total Lubricants
- ▴ Basin 3 Liquid Gas Bulk Terminal at Sokhna Port
- ▴ Habshan to Fujairah Crude Oil Pipeline HVAC
- ▴ Safah Field Water Injection Control System
- ▴ SIBA Gas Field Development Project
- ▴ Poly Methyl Methacrylate (PMMA) Process Refrigeration Control System



Occidental Petroleum Corporation



شركة أبوظبي للعمليات البترولية البرية (أدكو)
Abu Dhabi Company for Onshore Oil Operations (ADCO)

OIL&GAS AND PETROCHEMICALS PROJECTS



- ▴ **Zone-1 Control Panel for Air Cooled Chiller – M Project**
- ▴ **DAMS Phase II Residual Works**
- ▴ **BISAT-C Air Compressor & N2 Package Control System**
- ▴ **EWT Modernization Project, KIU Iraq**
- ▴ **Thuleilat ESP Production Well RTU Systems**



Containerized Electrical & Controls Solutions (E-House)



▤ Far West Gas Compression Station – Containerized Control System and LV MCC

▤ Al-Baraka Water Injection Station – Containerized Control System

▤ Gas Compression Station at Tatweer Petroleum Bahrain



Occidental Petroleum Corporation



تطوير للبترو
TATWEER PETROLEUM

DISTRICT COOLING PROJECTS



- ▤ Jumeirah Lake Towers District Cooling Plant 1
- ▤ Dubai Metro Green Line District Cooling Plants 10 & 11
- ▤ ADNEC Capital Center District Cooling Plant
- ▤ Abu Dhabi Airport District Cooling Plant
- ▤ Neom Development Central Utility Complex 1 & 2
- ▤ King Saud University Campus District Cooling Plant



POWER GENERATION & DISTRIBUTION



- ▤ Qurayyah Independent Power Plant Turbine Inlet Air Chilling (TIAC)
- ▤ Khor Al-Zubair Power Plant Turbine Inlet Air Chilling (TIAC)



WATER/WASTEWATER PROJECTS



- ▴ Lusail Marina RO Plant
- ▴ Government Agencies Compound Infrastructure & Utility
- ▴ Madina Hajj City Infrastructure & Utility (Grey Water, Drainage, Sewage, & Irrigation)
- ▴ Ras Al-Khair Sea Water Pump Station
- ▴ STA Separators for Automotive Engine Production Process Waste Water



METALS PROJECTS



- ▤ **Emirates Aluminum Phase I – Plant-wide SCADA Integration**
- ▤ **Emirates Aluminum Phase II - Controls, Instrumentation, SCADA POV & Integration**
- ▤ **Automatic Anode Tracking Crane Positioning**
- ▤ **Boilers Controls Retrofit for the Combined Cycle Power Plant**
- ▤ **Fume Treatment System Control Upgrade**

EGA  الإمارات العالمية للألمنيوم
EMIRATES GLOBAL ALUMINIUM

emal
الإمارات للألمنيوم
Emirates Aluminium

dubal
Dubai Aluminium

ELECTRICAL PROJECTS



- ▤ Central Command and Control Center for Palestine Electricity Transmission Limited
- ▤ Expansion of SRF at King Fahad Naval Base HV Switchgear SCADA
- ▤ Expansion of SRF at King Fahad Naval Base Lighting Control



ASSET CONDITION MONITORING PROJECTS



- ▴ DEWA Najma-2 and DIP-1 Pumping Stations
- ▴ Jebel Ali Sewage Treatment Pumping System Phase 2
- ▴ DEWA Jebal Ali RO Plant HP Pumps Condition Monitoring System Retrofit
- ▴ Shoaiba-Mina Water Transmission System
- ▴ King Saud University Chiller Plant Condition Monitoring System



المؤسسة العامة لتحلية المياه المالحة
Saline Water Conversion Corporation



A photograph of a modern office space. On the left, there are large windows with horizontal blinds. The office is furnished with several long desks, each equipped with multiple computer monitors, keyboards, and ergonomic office chairs. Some desks have small white storage drawers. On the right wall, a large monitor is mounted high up, displaying a complex data dashboard. Below it, there are two small framed pictures and a 'NO SMOKING' sign. The floor is covered with a light-colored carpet. The overall lighting is bright, coming from the windows and the office lights.

Thank You